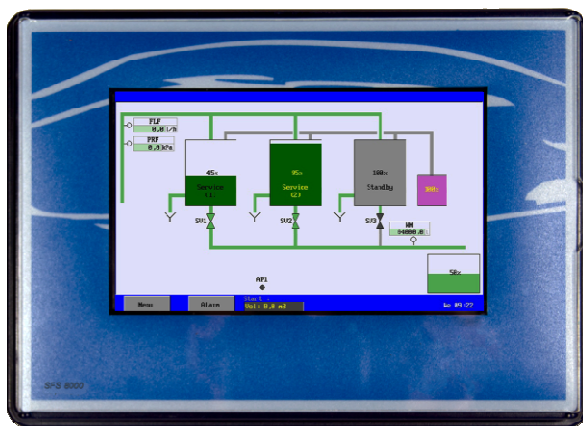




EQUIPMENT FOR WATER TREATMENT SYSTEMS

SFS8000

Controller for Softener / Filter



■ Description

The unit type SFS8000 is universal applicable for automatic monitoring and control of softener / filtering plants.

There are four possible stages : "Stand by", "Service", "Service Stop", "Regeneration".

This unit can monitor flow, pressure and several inputs e.g. level switches, water meters, etc...

Adaptable to user specific requirements by built-in programmable options. The programmed configuration will be stored into non volatile memory and therefore not be affected by power loss.

The standard version is suitable for duplex plants. The controller can also be expanded by an additional relay circuit board to be suitable for triplex plants..

■ Features

User Interface

- Colour 7" TFT display (800x480)
- Control through touch panel
- Language : English, French, German, Dutch

Inputs

- 8x Input for potential free switch
- Expandable with (depending on total configuration) :
- 16x Input for potential free switch
- 12x input 0 (4) -20mA (Flow, pressure, temperature and tank level)

Outputs

- 8x Relay output (powered)
- 6x Relay output (dry contact)
- Optional circuit boards for e.g. 3rd filter:
- 7 Additional relay outputs (4x powered / 3x dry contact)
- 6x output 0 (4) -20mA (recorder)

Memory

- Last twenty alarm messages will be stored.
- Real time clock with "lifetime" battery
- Programming will be stored and not be affected by power loss.

SD Card

- Software updates
- Programming (Save and Load)
- Data log, Process log and Alarm log

Communication (optional)

- RS485 (data log formats : CSV)
- RS232 (data log formats : CSV)
- Webserver
 - visualisation (schematic)
 - configuration
 - download log files on SD Card
- Email messages (alarm)
- Modbus compatible data reading

Enclosure

- Suitable for wall mounting, panel mounting and plate mounting
- IP65

Power supply

- 24 VAC input / (output = input or extern)
- 115 VAC input / (output = input or extern)
- 230 VAC input / (output = input or extern)
- ^{*)} 115 VAC input / 24 VAC output
- ^{*)} 230 VAC input / 24 VAC output
- ^{*)} 240 VAC input / 24 VAC output

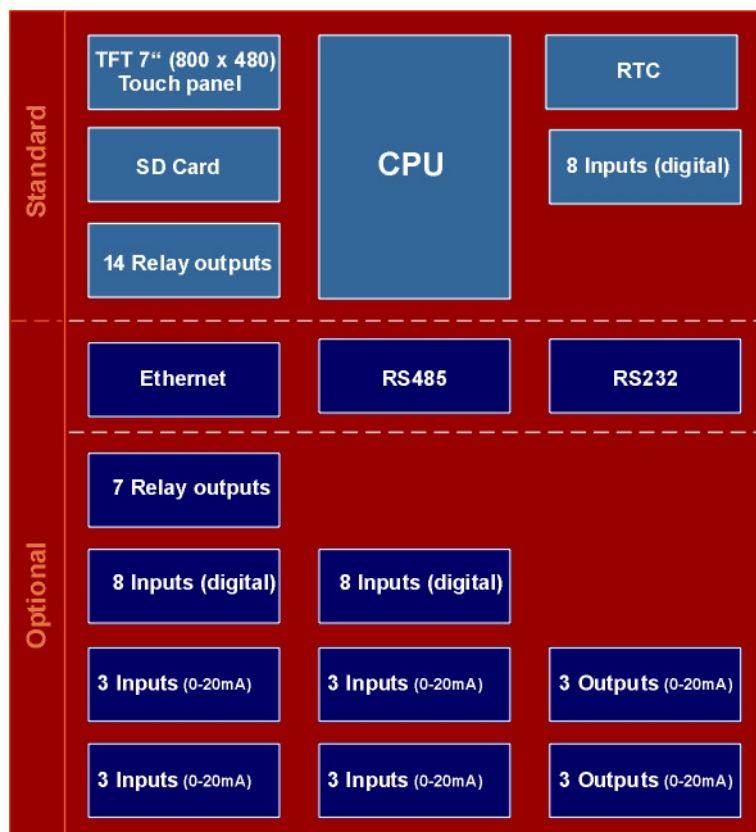
^{*)} Expand options limited.



EQUIPMENT FOR WATER TREATMENT SYSTEMS

SFS8000

■ Block diagram



■ Function Table

The relay outputs, digital inputs, inputs 0-20mA and outputs 0-20mA are free programmable for the following functions :

Relay Outputs	Digital Inputs	Inputs 0-20 mA	Outputs 0-20 mA
Service valve	Water meter general	Flow meter	Recorder
Central valves (e.g. Fleck)	Water meter filter (3)	Pressure meter	
Solenoid valves	Level switch storage tank	Tank level	
Regeneration output	Regeneration start		
Flush valve	Level chemical tank		
High pressure pump	Wait		
Alarm (2)	Remote alarm reset		
Additional program (3)	Pump protection switch		
	Valve position switch		



EQUIPMENT FOR WATER TREATMENT SYSTEMS

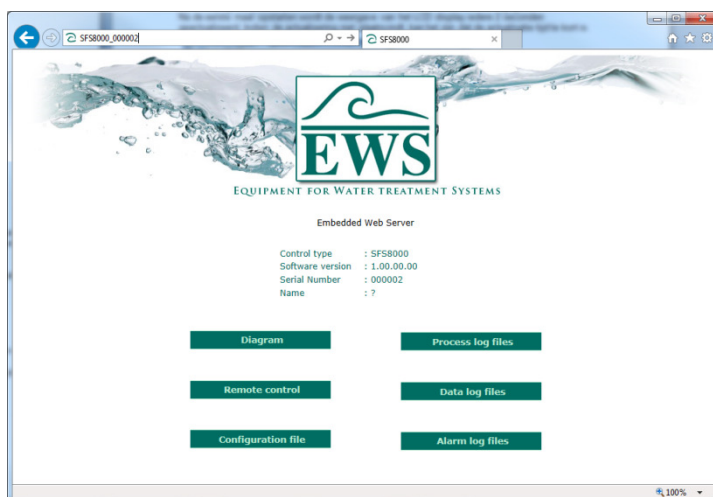
SFS8000

■ Ordering Information

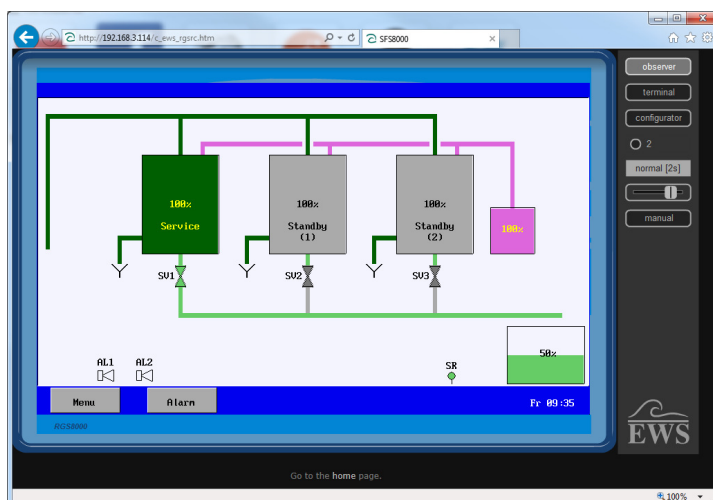
SFS8000

Power supply :	24 VAC / 24 VAC	115 VAC / 24 VAC	115 VAC / ext.power
	115 VAC / 115 VAC	230 VAC / 24 VAC	230 VAC / ext.power
	230 VAC / 230 VAC	240 VAC / 24 VAC	240 VAC / ext.power
Communication	without RS232, RS485 and ethernet with RS232, RS485 and Ethernet		
Relay outputs	number of circuit boards with 7 relay outputs (4x powered, 3x dry)		
Inputs digital	number of additional circuit boards with 8 digital inputs		
Inputs 0-20mA	number of additional circuit boards with 3 inputs 0-20 mA		
Outputs 0-20mA	number of additional circuit boards with 3 outputs 0-20 mA		
			(2 – 3)
			(0 – 2)
			(0 – 4)
			(0 – 2)

■ Web browser screen shots



Main menu



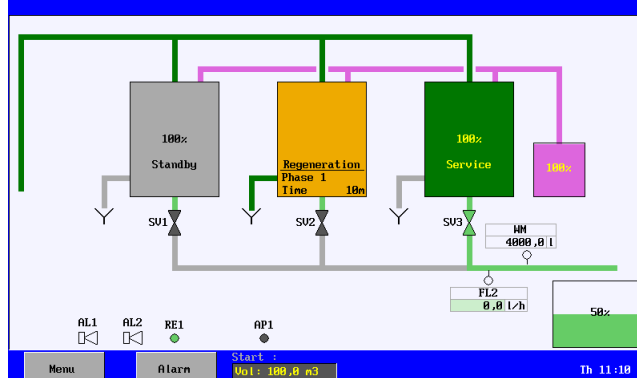
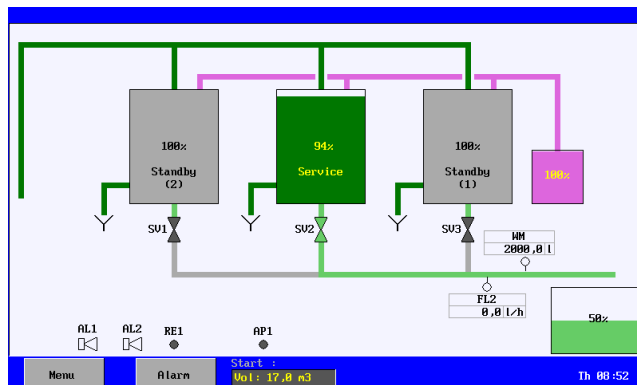
Remote control



EQUIPMENT FOR WATER TREATMENT SYSTEMS

SFS8000

■ General screen shots



Main menu	Media	Ethernet
Manual control	Ethernet	<input checked="" type="checkbox"/> Auton. IP (DHCP)
Information	SD Card	IP 192 168 1 5
User settings	Email	NM 255 255 255 0
Installation	KS405	GM 192 168 1 254
Clock	Harddisk	Port 80
Language	KS232	
Media		
Service		
Security		
Close	Close	Close

Installation	Programming	Components
Inventory	Components	Property
Programming	Installation	Filters
	Filters	Hardness
		Water meter start
		Interval start
		Clock start
		Min. regen. distance
		Delayed regen.
		Pre contact
Close	Close	Close