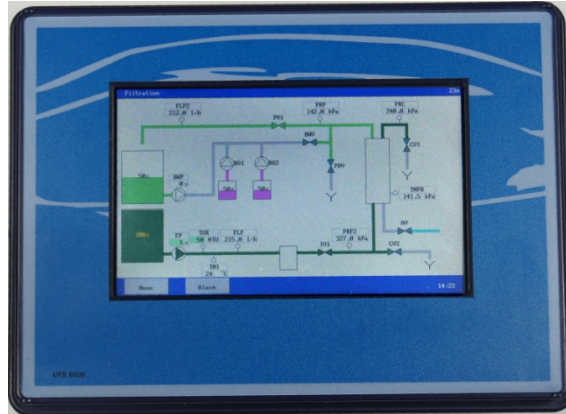




EQUIPMENT FOR WATER TREATMENT SYSTEMS

UFS8000

Controller for Ultra filtration



■ Description

The unit type UFS8000 is universal applicable for automatic monitoring and control of ultra filtration plants. There are nine possible stages : "Stand by", "Filtration", "Pre flush", "Backwash 1", "Backwash 2", "CEB 1", "CEB 2", "CEB 3" and "Integrity test".

This unit can monitor measurements (all through 0-20mA inputs) like flow, pressure, turbidity, temperature and tank level and several switches e.g. level switches, exceeded pressure switch, start backwash, end position switch for valves, etc.. Adaptable to user specific requirements by built-in programmable options. The programmed configuration will be stored into non volatile memory and therefore not be affected by power loss.

■ Features

User Interface

- Colour 7X TFT display (800x480)
- Control through touch panel
- Language : English, French, German, Dutch and Russian

Inputs

- 8x Input for potential free switch
- Expandable with :
 - 16x Input for potential free switch
 - 12x input 0 (4) -20mA (Flow, pressure, turbidity, temperature and tank level)

Outputs

- 8x Relay output (powered)
- 6x Relay output (dry contact)
- Optional circuit boards for:
 - 6x output 0 (4) -20mA (recorder, soft starter setpoint)

Memory

- Last twenty alarm messages will be stored.
- Real time clock with "lifetime" battery
- Programming will be stored and not be affected by power loss.

SD Card

- Software updates
- Programming (Save and Load)
- Data log, Process log and Alarm log

Communication (optional)

- RS485 (data log formats : CSV)
- RS232 (data log formats : CSV)
- Webserver
 - visualisation (schematic)
 - configuration
 - download log files on SD Card
- Email messages (alarm)

Enclosure

- Suitable for wall mounting, panel mounting and plate mounting
- IP65

Power supply

- 24 VAC input / (output = input or extern)
- 115 VAC input / (output = input or extern)
- 230 VAC input / (output = input or extern)
- ^{*)} 115 VAC input / 24 VAC output
- ^{*)} 230 VAC input / 24 VAC output
- ^{*)} 240 VAC input / 24 VAC output

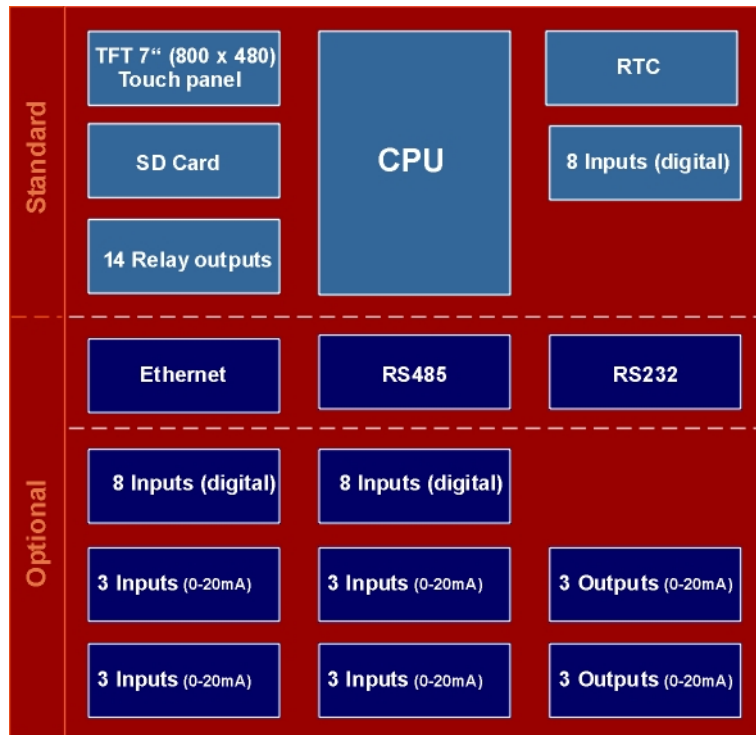
^{*)} Expand options limited.



EQUIPMENT FOR WATER TREATMENT SYSTEMS

UFS8000

■ Block diagram



■ Function Table

The relay outputs, digital inputs, inputs 0-20mA and outputs 0-20mA are free programmable for the following functions :

Relay Outputs	Digital Inputs	Inputs 0-20 mA	Outputs 0-20 mA
Inlet valve (2)	Stop	Flow meter	Recorder
Feed pump	High level switches	Pressure meter	Softstarter setpoint
Concentrate valve (2)	Low level switches	Tank level	
Permeate valve (2)	Exceeded pressure	Turbidity	
Permeaat dump valve	Start backwash	Temperature	
Backwash valve	Start filtration	pH meter	
Backwash pump	Motor security switch		
Dosing pump (3)	Remote alarm reset		
Air valve	Level switch dosing tank		
Alarm	Pump protection switch		
	Valve position switch		



EQUIPMENT FOR WATER TREATMENT SYSTEMS

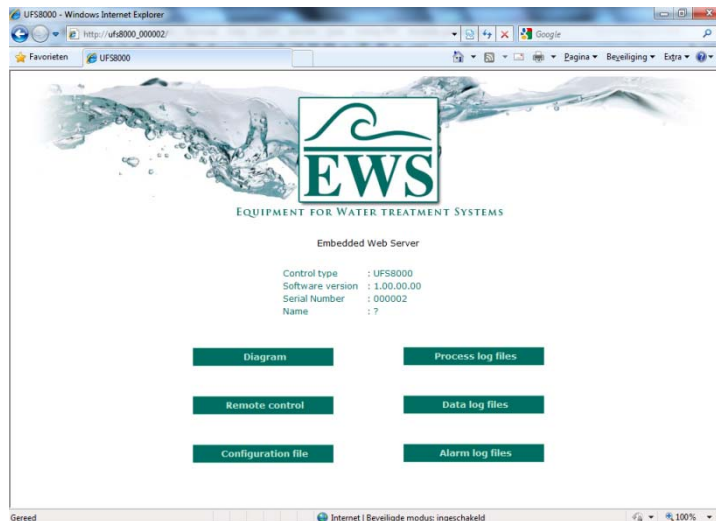
UFS8000

■ Ordering Information

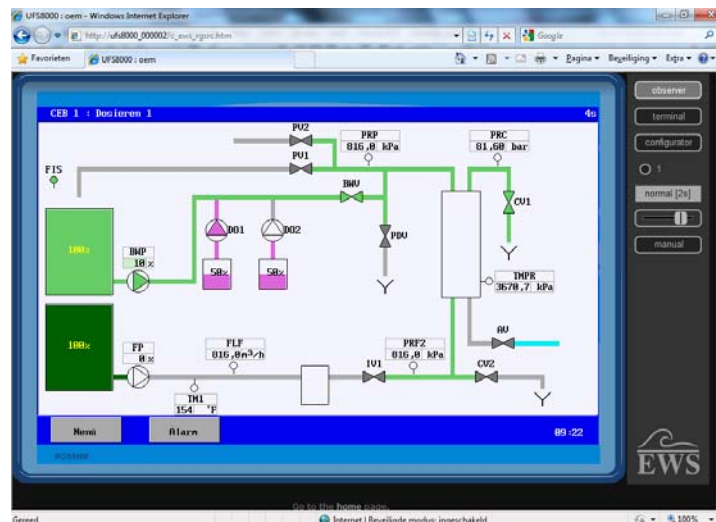
UFS8000

Power supply :	115 VAC / 24 VAC 230 VAC / 24 VAC 240 VAC / 24 VAC 24 – 240 VAC / output = input 24 – 240 VAC / output = external power	
Communication	without RS232, RS485 and ethernet with RS232, RS485 and ethernet	
Relay outputs	number of circuit boards with 7 relay outputs (4x powered, 3x dry)	(2)
Inputs digital	number of additional circuit boards with 8 digital inputs	(0 – 2)
Inputs 0-20mA	number of additional circuit boards with 3 inputs 0-20 mA	(0 – 4)
Outputs 0-20mA	number of additional circuit boards with 3 outputs 0-20 mA	(0 – 2)

■ Web browser screen shots



Main menu



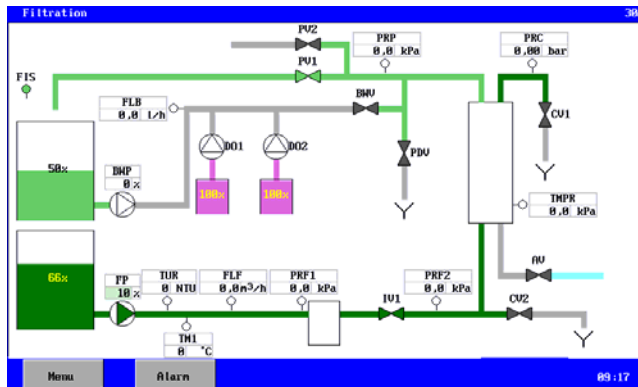
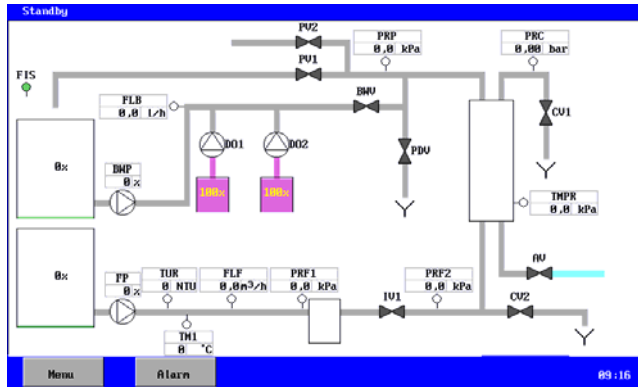
Remote control



EQUIPMENT FOR WATER TREATMENT SYSTEMS

UFS8000

■ General screen shots



Main menu 1	Media 6000	Ethernet 6100
Manual control	Ethernet	<input checked="" type="checkbox"/> Auton. IP (DHCP)
Information	SD Card	IP 192 168 1 5
User settings	Email	NM 255 255 255 0
Installation	RS485	GM 192 168 1 254
Clock	Harddisk	Port 00
Language	RS232	
Media		
Service		
Security		
Close	Close	Close

Programming 2000	UF Unit 5000	Back wash 1 5310
Components	Properties	Air Scour
UF Unit	Filtration	Air Scour
	Pre Flush	Time 30 s
	Back wash 1	<input checked="" type="checkbox"/> Air valve
	Back wash 2	<input type="checkbox"/> Feed Pump
	CEB 1	<input checked="" type="checkbox"/> Conc. valve 1
	CEB 2	<input type="checkbox"/> Perm. valve 1
	CEB 3	<input type="checkbox"/> Perm. valve 2
	Integrity test	<input type="checkbox"/> Backwash Pump
Close	Close	Close